

A photograph of four healthcare professionals (three women and one man) in a clinical setting, practicing on a medical mannequin. They are wearing scrubs and gloves, and are focused on the task. The background shows medical equipment and a hospital bed.

SASI

SIMULATION & ADVANCED SKILLS INSTITUTE

HEALTHCARE

EDUCATION OFFERINGS

Updated 08.20.2024

Program Manager

570-887-6523

Arterial Line Insertion/ ABG draw

- Simulab Ultrasound ArteriaLine Trainer
- Arterial line catheters
- Sonosite ultrasound



A close-up photograph of a person wearing blue surgical scrubs, performing a surgical hand scrub. Their hands and forearms are covered in thick white foam soap. The background is blurred, showing a clinical setting.

Aseptic Technique Training

- Self-gowning and gloving
 - Closed technique
- Assisted gowning and gloving
 - Open technique
- Surgical hand scrub



A.S.S.E.T. course

Advanced Surgical Skills for Exposure in Trauma – American College of Surgeons

This course is offered 1-2 times a year dependent on interest. Contact SASI staff for details and cost.

ASSET will teach you to:

- Demonstrate key anatomical exposures for the care of injured and acutely ill surgical patients
- Show the technical ability to expose important structures that may require acute surgical intervention to save life or limb
- Gain confidence in performing anatomic exposures independently

[Link to Website](#)



Biopsy

- Porcine tissue
- Task trainers
- Instrumentation
 - Excisional
 - Needle aspiration
 - Core needle
 - Image-guided
 - Punch

PROMPT Flex Birthing Simulator

The Advanced PROMPT Flex Birthing Simulator is an anatomically correct representation of a mother and baby. Its modular design allows for multiple training scenarios, and it forms the base for the complete PROMPT Flex range of birthing modules.

This birthing trainer offers a hybrid solution to your training needs. Quick and easy to set up straight from the box you are able to:

Use as a stand alone model for group learning

Secure to a bench top or bed for a more realistic bedside scenario to improve professional-patient communications

In addition to the functionality of the **PROMPT Flex Standard model**, this version of the PROMPT has a Bluetooth enabled Force Monitoring baby.

During labor there is a threshold of force that can result in brachial plexus injury during shoulder dystocia. The Force Monitoring Baby measures the force applied by trainees during drills. In conjunction with the Limbs & Things Birthing Simulator Software, instructors have the ability to record actions and interventions made, and the time to deliver the baby.



A simple meter mode in the software allows trainees valuable practice in applying force to the baby outside of the context of a scenario - enabling them to become familiar with the feel of both safe and excessive force before encountering a real obstetric emergency.

[Product Link](#)

PROMPT Flex Birthing Simulator– add ons

[Postpartum Hemorrhage Module](#)

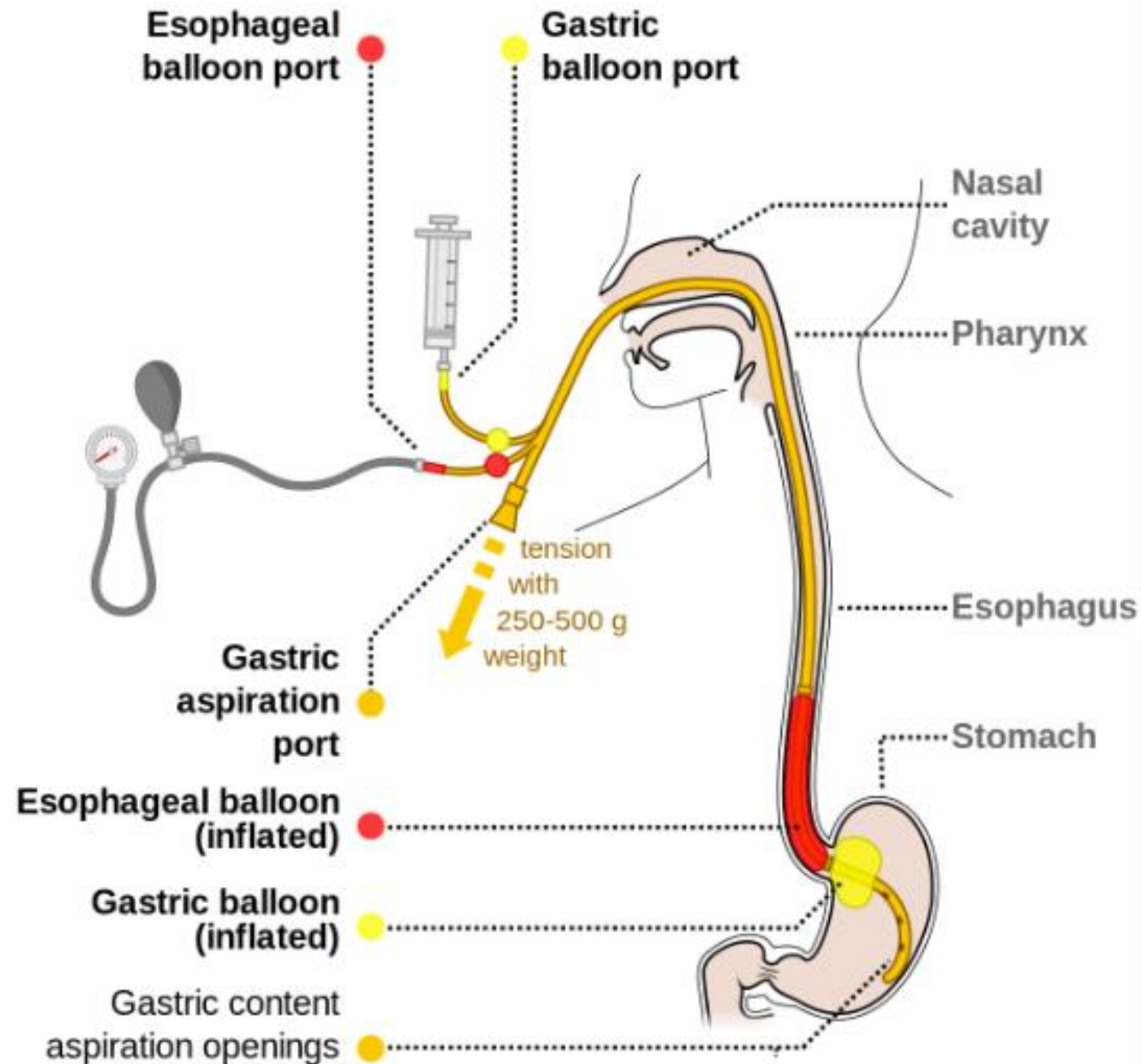
[Cervical Dilation & Effacement Module](#)

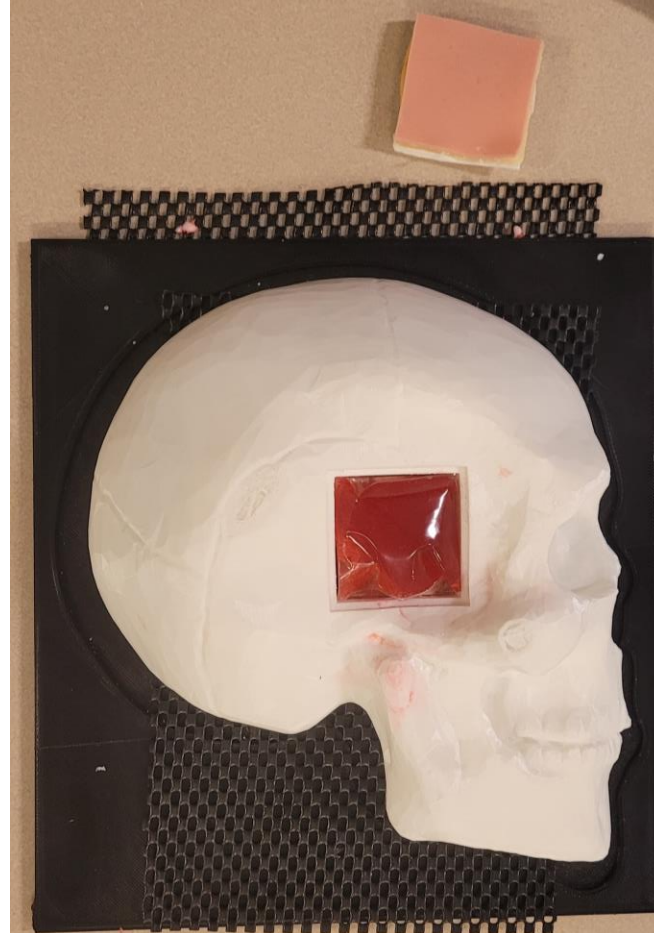
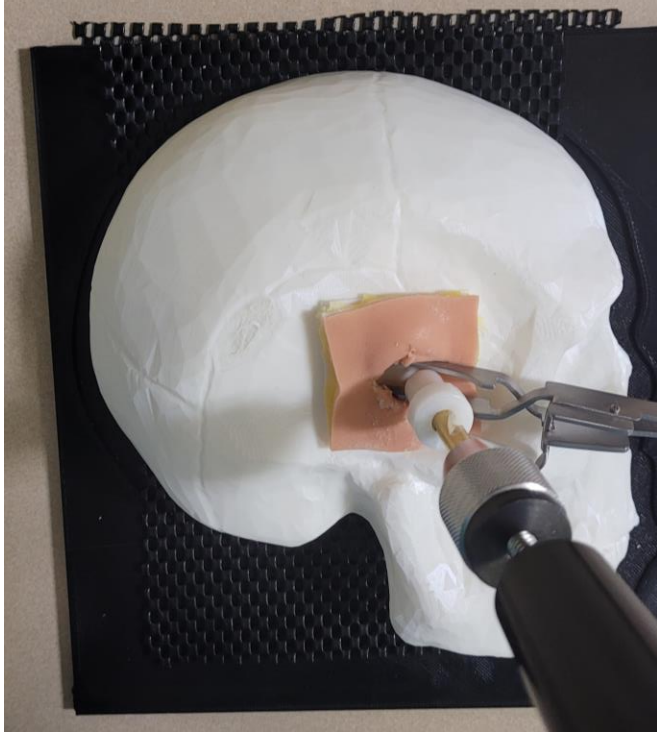
[Enhanced Caesarean Section Module](#)



Blakemore and Salad technique

- Airway Trainer
- Suction





Burr holes

- 3D printed model
- Blood for instant feedback



Cast application

- Plaster/fiberglass casting tape
- Under cast materials



Shoulder reduction

- 3D printer
- External rotation
- Traction countertraction

Central Line Insertion

- CentraLine® Man
 - Sub-clavian
 - Femoral
- Pressure Injectable kits
- Sonosite ultrasound



Cricothyrotomy-Surgical and Needle, Percutaneous tracheostomy

- Porcine Trachea
- Cricothyrotomy/
tracheotomy kits
- Simulab TraumaMan
trainer



Emergency Dental Procedures

- Local injections
- Suturing
- Trauma care
- Splinting
- Restoration
- Abscess



Ear Examination

- Life size head and shoulders
- 4 ear types – 1 pair of each
 - Normal
 - Stenosis
 - Foreign body ear – normal
 - Foreign body ear - stenosis



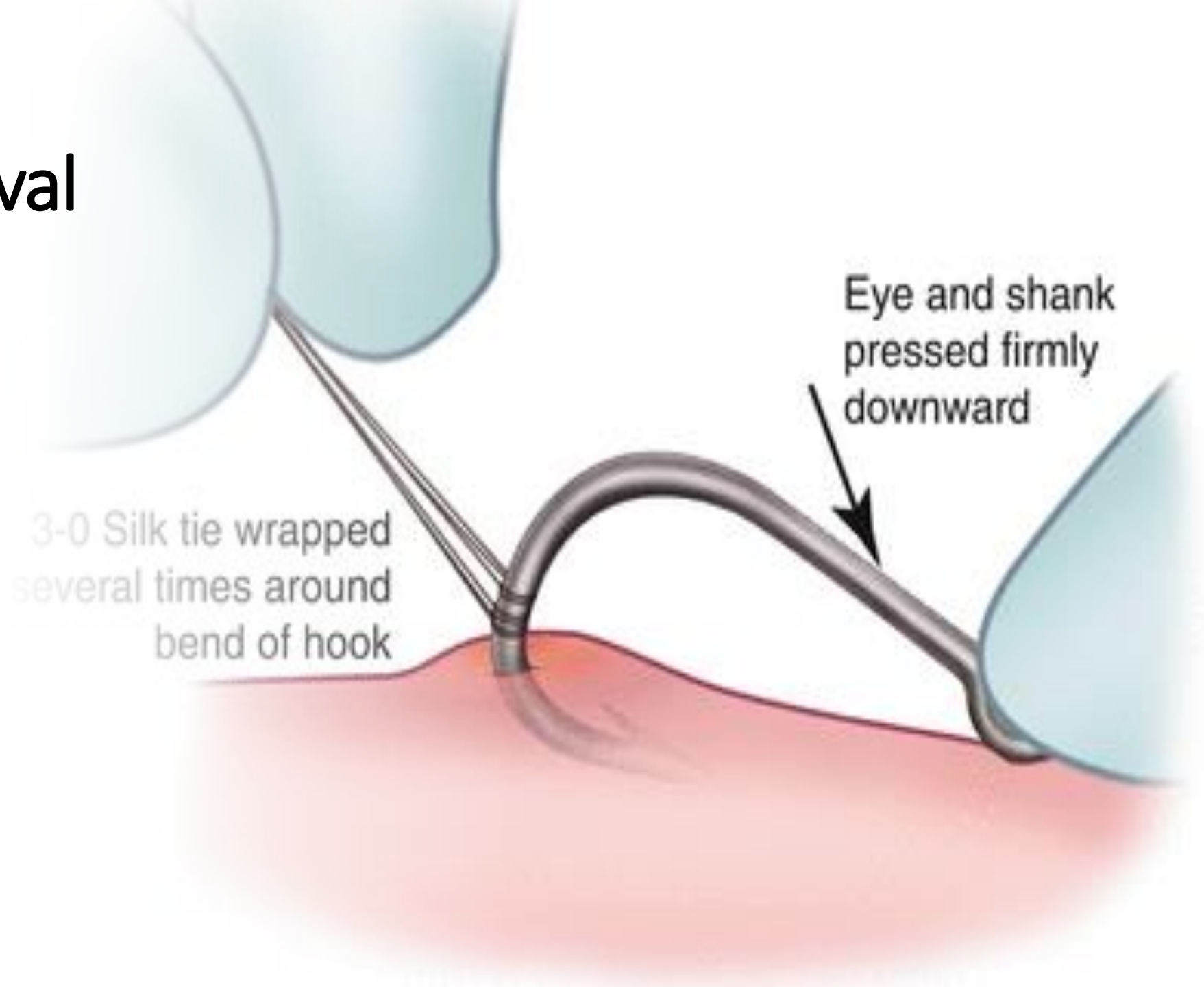
Eye Examination


- By combination of slides, depth and pupil diameter 90 patient cases can be simulated.
- Supplied slides include:
 - Normal eye-ground
 - Hypertensive retinopathy: arteriolar vasoconstriction grade 3, arteriolosclerosis grade 1, hemorrhages and cotton wool spot, simple vein concealment.
 - Simple/background diabetic retinopathy: microaneurysms, hemorrhages & hard exudates
 - Papilloedema (chronic phase)
 - Papilloedema (acute phase)
 - Glaucomatous optic atrophy: glaucomatous optic disc cupping & nerve fiber bundle defect
 - Retinal vein occlusion (acute phase): flame-shaped hemorrhage & cotton wool spots
 - Retinal vein occlusion (after retinal laser photo-coagulation)
 - Toxoplasmosis: retinochoroiditis
 - Age-related macular degeneration: macular exudates & subretinal hemorrhage



Fishhook Removal

- Simulation skin or porcine
- Fishhooks
- Instrumentation





FLS (Fundamentals of Laparoscopic Surgery)

- FLS trainer
- Instrumentation
- Consumables

*Virtual reality option

- See Skills Lab - *Simulators* PowerPoint for additional details

NOTE: There are individual & take-home training options. Ask staff for details.

ATLS (Advanced Training in Laparoscopic Suturing)

- FLS trainer
- Instrumentation
- Consumables

*Virtual reality option

- See Skills Lab - *Simulators* PowerPoint for additional details



3-Dmed LCBDE Trainer

Laparoscopic Common Bile
Duct Exploration





Foreign Body Removal

- Nose with septum trainer
- Ear trainer
 - otoscope
- Instrumentation
- Foreign bodies



Instrumentation Identification

- Tailored to suit specialty
- “Jeopardy” style training game

Intraosseous Vascular Access (IO)

- EZ-IO power driver
- Training bone with tissue
- EZ-IO needles



IV Insertion

- Task trainers
 - IV training arm
 - Venipuncture pad
- IV start kit
- Ultrasound (if needed)





Knot Tying

- Multiple types of trainers

NOTE: There are individual & take-home training options. Ask staff for details.

Laryngoscopy-Direct/Video, Intubation, Bronchoscopy

- GlideScope®
- Airway trainers
 - Adult
 - Child
 - Infant
 - Neonatal
- ETT, I-Gel, LMA
- S.A.L.A.D. technique





Lumbar Puncture/Epidural

- Trainer
 - Adult
 - Infant
- Lumbar puncture kit
- Epidural kit

Nail excision and Trephination

- Trainer
- Instrumentation
- Disposables





Nerve Block

- Nerve block trainer
- Sonosite® ultrasound
- Disposables

Ostomy Creation

- Training boxes
- Simulation double layer bowel





Paracentesis

- Paracentesis trainer
- Paracentesis kit
- Sonosite® ultrasound

[Web site](#)

Pericardiocentesis - Ultrasoundable

This simulator allows trainees to practice pericardiocentesis: inserting the needle under ultrasound guidance, piercing the pericardial sac and aspirating pericardial fluid.

[Product web site](#)





Perineal Repair

- Episiotomy & Perineal Laceration Trainer
- Instrumentation
- Sutures

NOTE: There are individual & take-home training options. Ask staff for details.



Perimortem C-Section

- Baby with umbilical cord and placenta
- Fabricated uterus and skin
- Instrumentation
- Disposables



Ring Removal

- Simulation hand
- Rings
- Manual Ring remover/jewelry cutter
- Disposables

Sawbones

- Orthopedic bones designed to be cut, drilled, tapped, or gouged with standard hand, or powered instruments



Fujifilm Sonosite PX

- Touch and physical controls
- Advanced image clarity
- Access to Sonosite Institute, educational portal

[Sonosite PX | Fujifilm Sonosite](#)



S.A.L.A.D. Simulator – Life/form

- Suction Assisted Laryngoscopy and Airway Decontamination (S.A.L.A.D.) simulator uses suction to enhance first pass successful laryngoscopy (FPS-L) with a non-anesthetized patient in active emesis
- Simulates a non-anesthetized patient for practicing intubation, ventilation, and suction
- Permits suction techniques, and proper cuff inflation with active emesis
- Offers room to maneuver and a slightly anterior position, making the simulator great for introductory classes as well as advanced students
- Apply cricoid pressure to change the position of the trachea and close the esophagus
- Realistically practice the Sellick maneuver





Superficial closure

- Wounds/incisions
 - Porcine feet
 - Artificial skin/tissue
- Suture/staples
- Instrumentation

NOTE: There are individual & take-home training options. Ask staff for details.



Surgical Anastomosis

- Artificial tissue
- Porcine tissue
 - Vascular
 - Bowel
 - Hand sewn
 - Stapled

NOTE: There are individual & take-home training options. Ask staff for details.

Surgical Stapling

- Artificial bowel
- Porcine bowel
- Staplers
 - GIA
 - TA
 - Endo GIA
 - EEA
- Instrumentation
- Reloads





Thoracentesis

- Thoracentesis trainer
- Thoracentesis kit
- Sonosite® ultrasound



Thoracostomy, Needle Decompression

- Simulab® TraumaMan
- Chest tubes
- Insertion kits
- Atrium
- Instrumentation

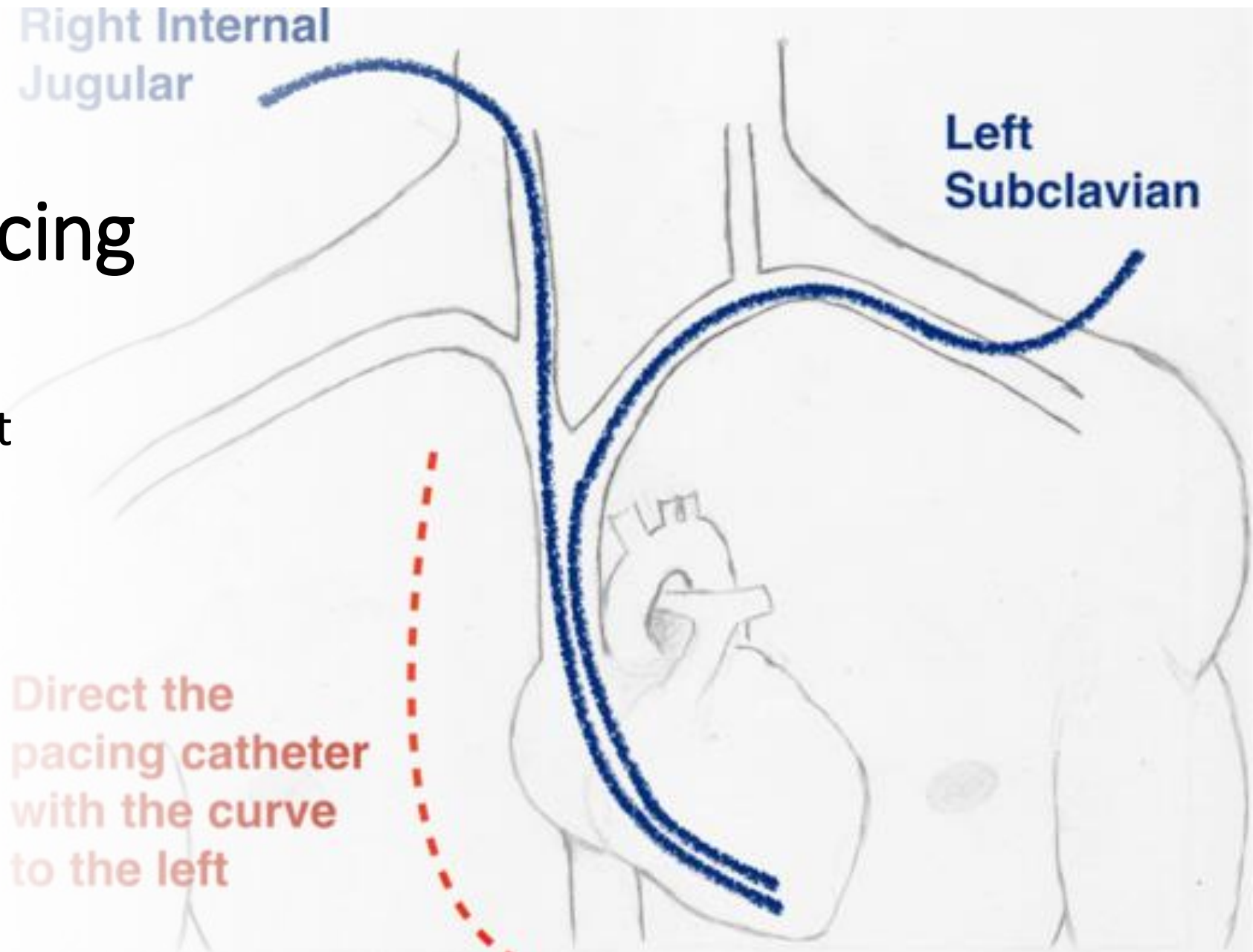


Thoracotomy for Cardiac Tamponade

- Fabricated trainer
- Instrumentation

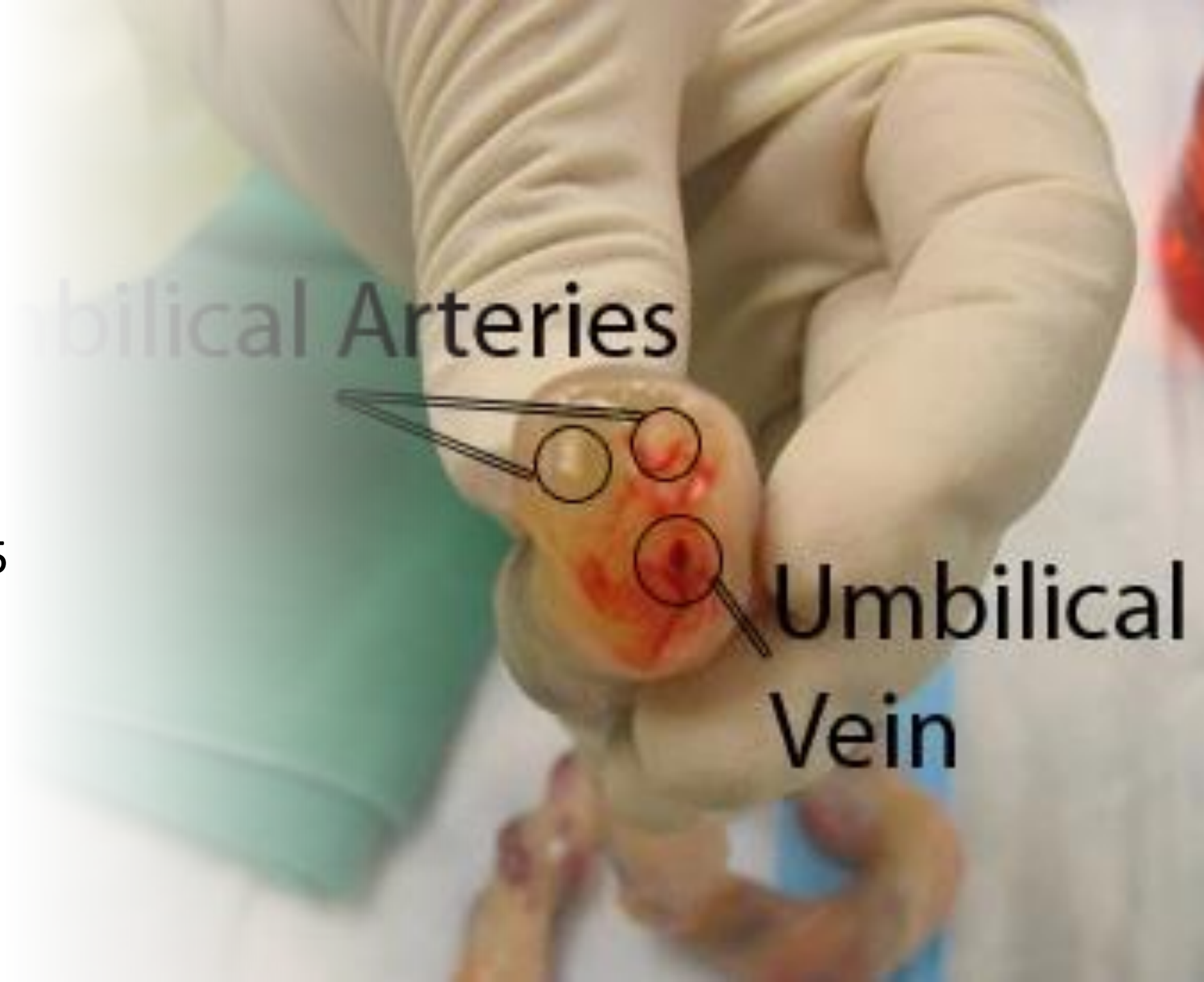
Transvenous Pacing

- Pacer generator
- Transvenous pacing kit
- Central line trainer



Umbilical Vein Cannulation

- Simulation umbilicus
- Catheterization tray
- Umbilical catheter 3.5 and 5.0

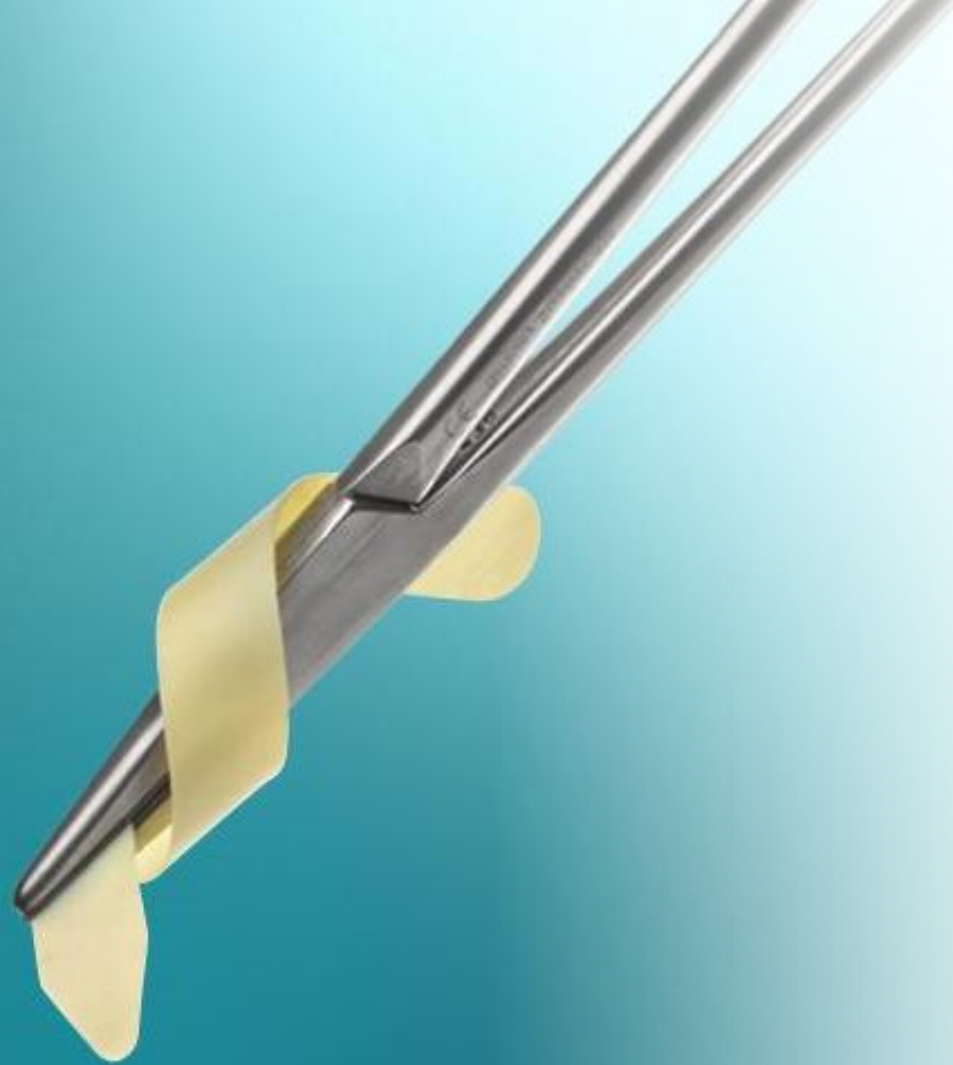




Ultrasound Training

- Sonosite® Ultrasound machines & OMT tables
- Viamedix simulator
- SonoSim Live Scan simulation
- SonoSim take home training

NOTE: There are individual & take-home training options. Ask staff for details.
See the Skills Lab - *Simulators* PowerPoint for additional details.



Vascular Surgery

- Grafting
 - Biologic patch (LeMaitre Vascular, Inc.)
 - PTFE
 - Porcine aorta
 - Simulation veins/arteries
 - Instrumentation

NOTE: There are individual & take-home training options. Ask staff for details.

Wet Labs

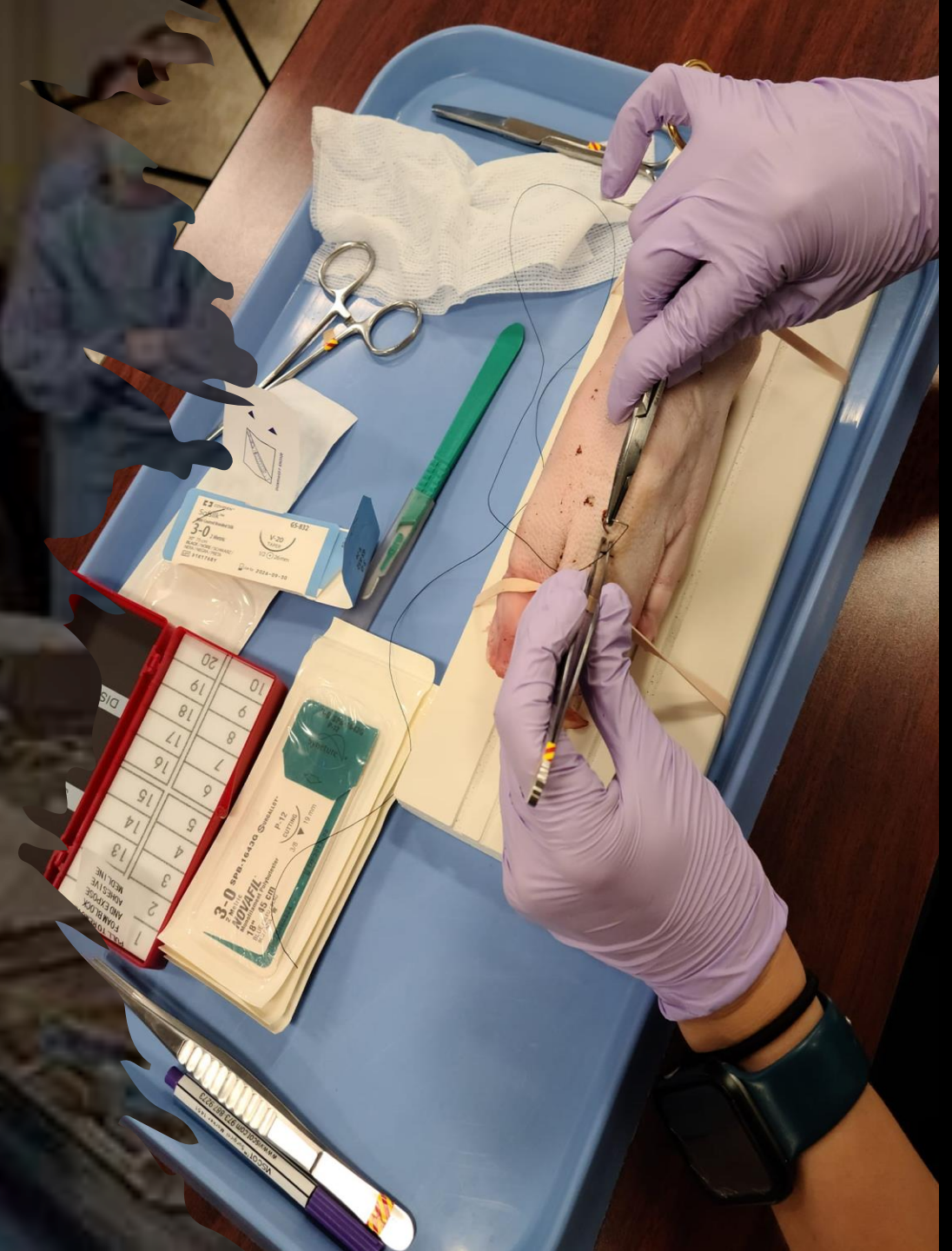
Learning sessions

- Dissection
- Surgical procedures
- Skin closure
- Biopsy

Tissue Types

- Human cadaver
- Porcine

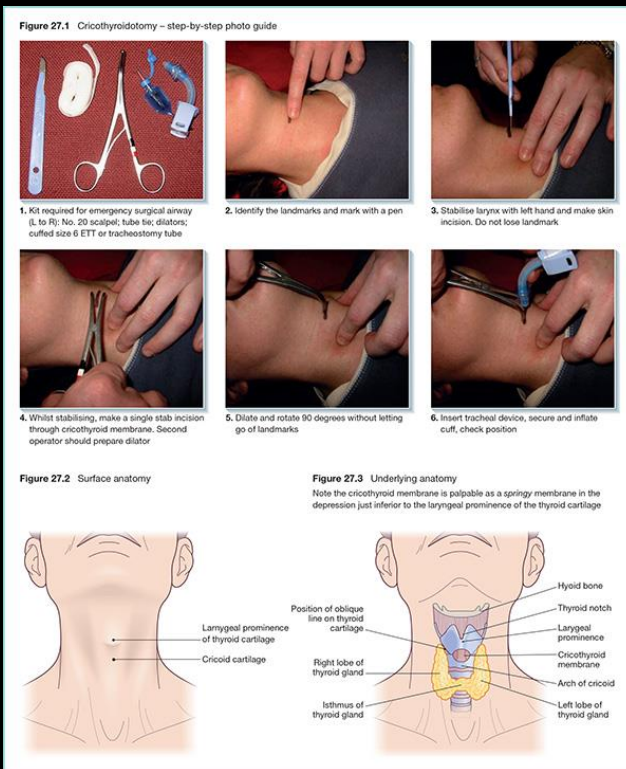
** See Skills Lab staff with all inquiries



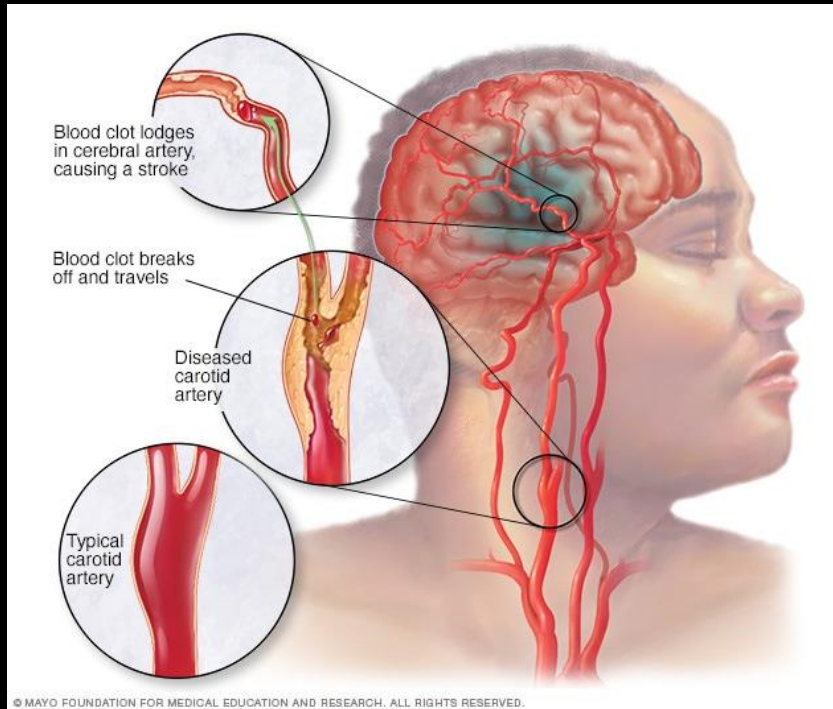
In Situ Training

We can help you make your training more realistic.

Airway Emergency Drills



Stroke Drills

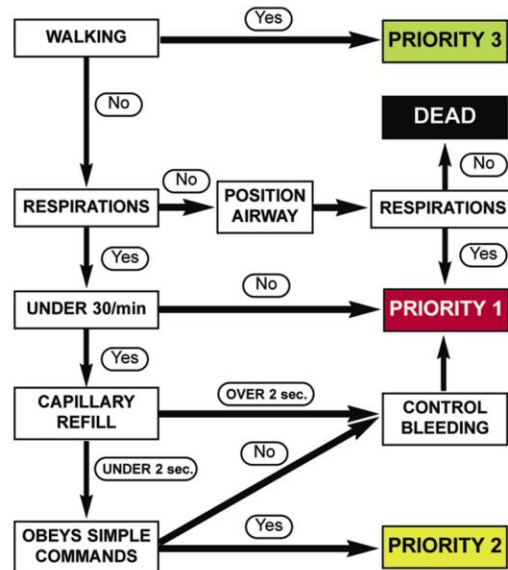


Cardiac Arrest Drills



Mass Casualty Drills

PRIMARY TRIAGE



If you are unable to obtain a capillary refill, check the radial pulse. If absent then control any bleeding and prioritize the patient **PRIORITY 1**.



Malignant Hyperthermia Drills

