



SASI
(SIMULATION & ADVANCED SKILLS INSTITUTE)
HEALTHCARE
EDUCATION OFFERINGS

Updated 08.30.2023

Program Manager

570-887-6523

A person wearing teal scrubs is shown from the chest down, washing their hands in a white sink. Their hands are covered in thick white soap foam, and they are in the middle of a scrubbing motion. The background is slightly blurred, showing a typical clinical or hospital setting.

Aseptic Technique Training

- Self-gowning and gloving
 - Closed technique
- Assisted gowning and gloving
 - Open technique
- Surgical hand scrub

Arterial Line Insertion/ ABG draw

- Simulab Ultrasound ArteriaLine Trainer
- Arterial line catheters
- Sonosite ultrasound



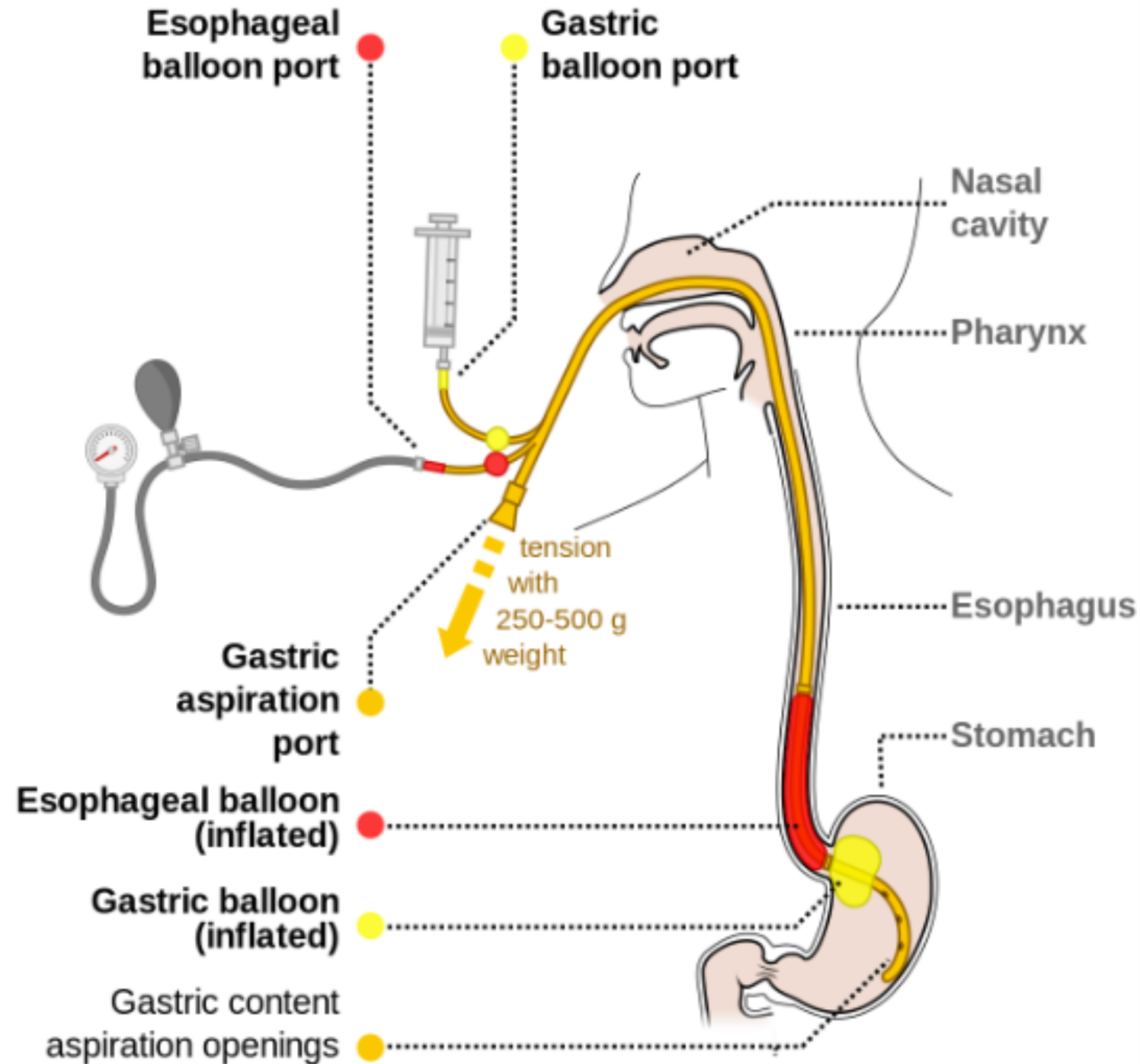


Biopsy

- Porcine tissue
- Task trainers
- Instrumentation
 - Excisional
 - Needle aspiration
 - Core needle
 - Image-guided
 - Punch

Blakemore and Salad technique

- Airway Trainer
- Suction





Cast application

- Plaster/fiberglass casting tape
- Under cast materials

Central Line Insertion

- Centraline® Man
 - Sub-clavian
 - Femoral
- Pressure Injectable kits
- Sonosite ultrasound



Cricothyrotomy-Surgical and Needle, Percutaneous tracheostomy

- Porcine Trachea
- Cricothyrotomy/
tracheotomy kits
- Simulab TraumaMan
trainer



Emergency Dental Procedures

- Local injections
- Suturing
- Trauma care
- Splinting
- Restoration



Ear Examination

- Life size head and shoulders
- 4 ear types – 1 pair of each
 - Normal
 - Stenosis
 - Foreign body ear – normal
 - Foreign body ear - stenosis



Eye Examination

- By combination of slides, depth and pupil diameter 90 patient cases can be simulated.
- Supplied slides include:
 - Normal eye-ground
 - Hypertensive retinopathy: arteriolar vasoconstriction grade 3, arteriosclerosis grade 1, hemorrhages and cotton wool spot, simple vein concealment.
 - Simple/background diabetic retinopathy: microaneurysms, hemorrhages & hard exudates
 - Papilloedema (chronic phase)
 - Papilloedema (acute phase)
 - Glaucomatous optic atrophy: glaucomatous optic disc cupping & nerve fiber bundle defect
 - Retinal vein occlusion (acute phase): flame-shaped hemorrhage & cotton wool spots
 - Retinal vein occlusion (after retinal laser photo-coagulation)
 - Toxoplasmosis: retinochoroiditis
 - Age-related macular degeneration: macular exudates & subretinal hemorrhage

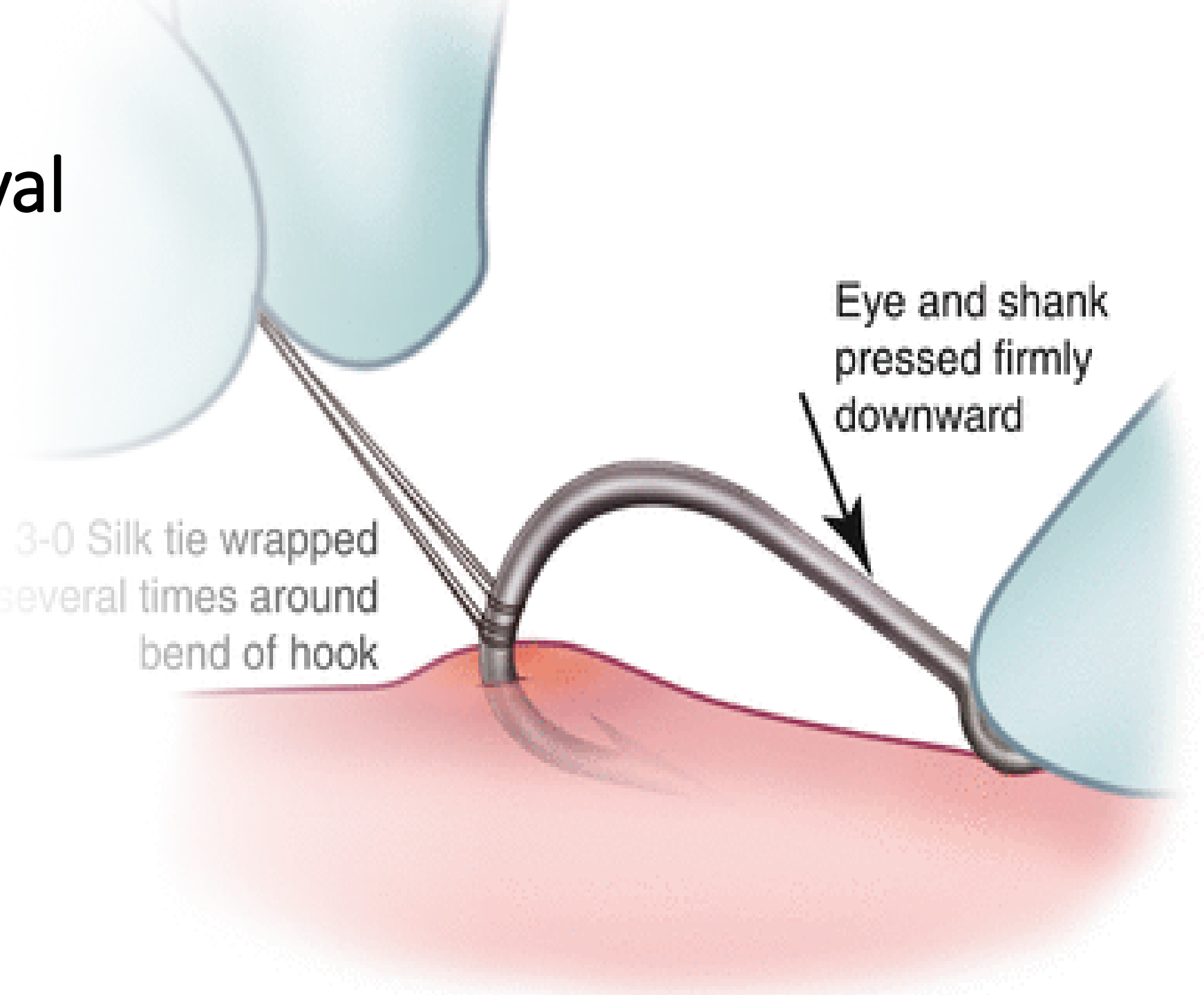


Fishhook Removal

- Simulation skin or porcine
- Fishhooks
- Instrumentation

3-0 Silk tie wrapped
several times around
bend of hook

Eye and shank
pressed firmly
downward





FLS (Fundamentals of Laparoscopic Surgery)

- FLS trainer
- Instrumentation
- Consumables

*Virtual reality option

- See Skills Lab - *Simulators* PowerPoint for additional details

NOTE: There are individual & take-home training options. Ask staff for details.



Foreign Body Removal

- Nose with septum trainer
- Ear trainer
 - otoscope
- Instrumentation
- Foreign bodies



Instrumentation Identification

- Tailored to suit specialty
- “Jeopardy” style training game

Intraosseous Vascular Access (IO)

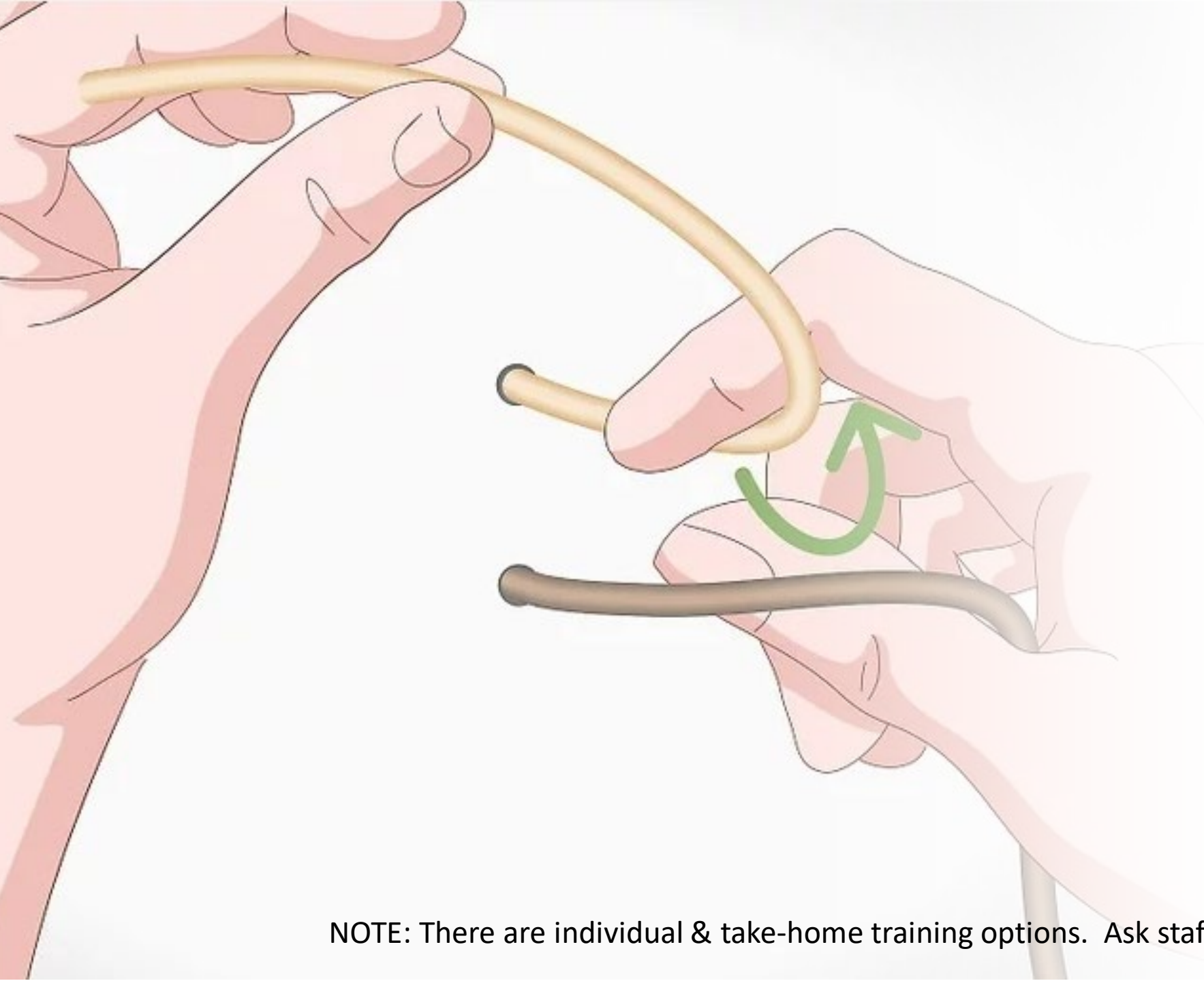
- EZ-IO power driver
- Training bone with tissue
- EZ-IO needles



IV Insertion

- Task trainers
 - IV training arm
 - Venipuncture pad
- IV start kit
- Ultrasound (if needed)





Knot Tying

- Multiple types of trainers

NOTE: There are individual & take-home training options. Ask staff for details.

Laryngoscopy-Direct/Video, Intubation, Bronchoscopy

- GlideScope®
- Airway trainers
 - Adult
 - Child
 - Infant
 - Neonatal
- ETT, I-Gel, LMA
- S.A.L.A.D. technique





Lumbar Puncture/Epidural

- Trainer
 - Adult
 - Infant
- Lumbar puncture kit
- Epidural kit

Nail excision and Trephination

- Trainer
- Instrumentation
- Disposables





Nerve Block

- Nerve block trainer
- Sonosite® ultrasound
- Disposables

Ostomy Creation

- Training boxes
- Simulation double layer bowel





Paracentesis

- Paracentesis trainer
- Paracentesis kit
- Sonosite® ultrasound



Perineal Repair

- Episiotomy & Perineal Laceration Trainer
- Instrumentation
- Sutures

NOTE: There are individual & take-home training options. Ask staff for details.

Pericardiocentesis

- Simulab[®] TraumaMan
- Disposables





Perimortem C-Section

- Baby with umbilical cord and placenta
- Fabricated uterus and skin
- Instrumentation
- Disposables



Ring Removal

- Simulation hand
- Rings
- Manual Ring remover/jewelry cutter
- Disposables

Sawbones

- Orthopedic bones designed to be cut, drilled, tapped, or gouged with standard hand, or powered instruments



Fijufilm Sonosite PX

- Touch and physical controls
- Advanced image clarity
- Access to Sonosite Institute, educational portal

[Sonosite PX | Fujifilm Sonosite](#)





Superficial closure

- Wounds/incisions
 - Porcine feet
 - Artificial skin/tissue
- Suture/staples
- Instrumentation

NOTE: There are individual & take-home training options. Ask staff for details.



Surgical Anastomosis

- Artificial tissue
- Porcine tissue
 - Vascular
 - Bowel
 - Hand sewn
 - Stapled

NOTE: There are individual & take-home training options. Ask staff for details.

Surgical Stapling

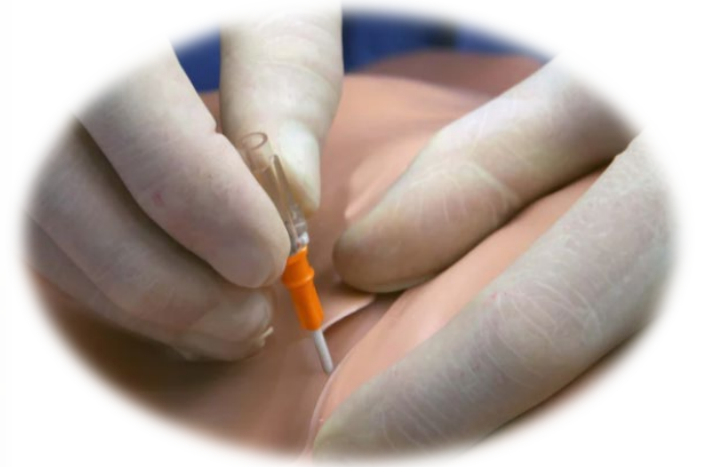
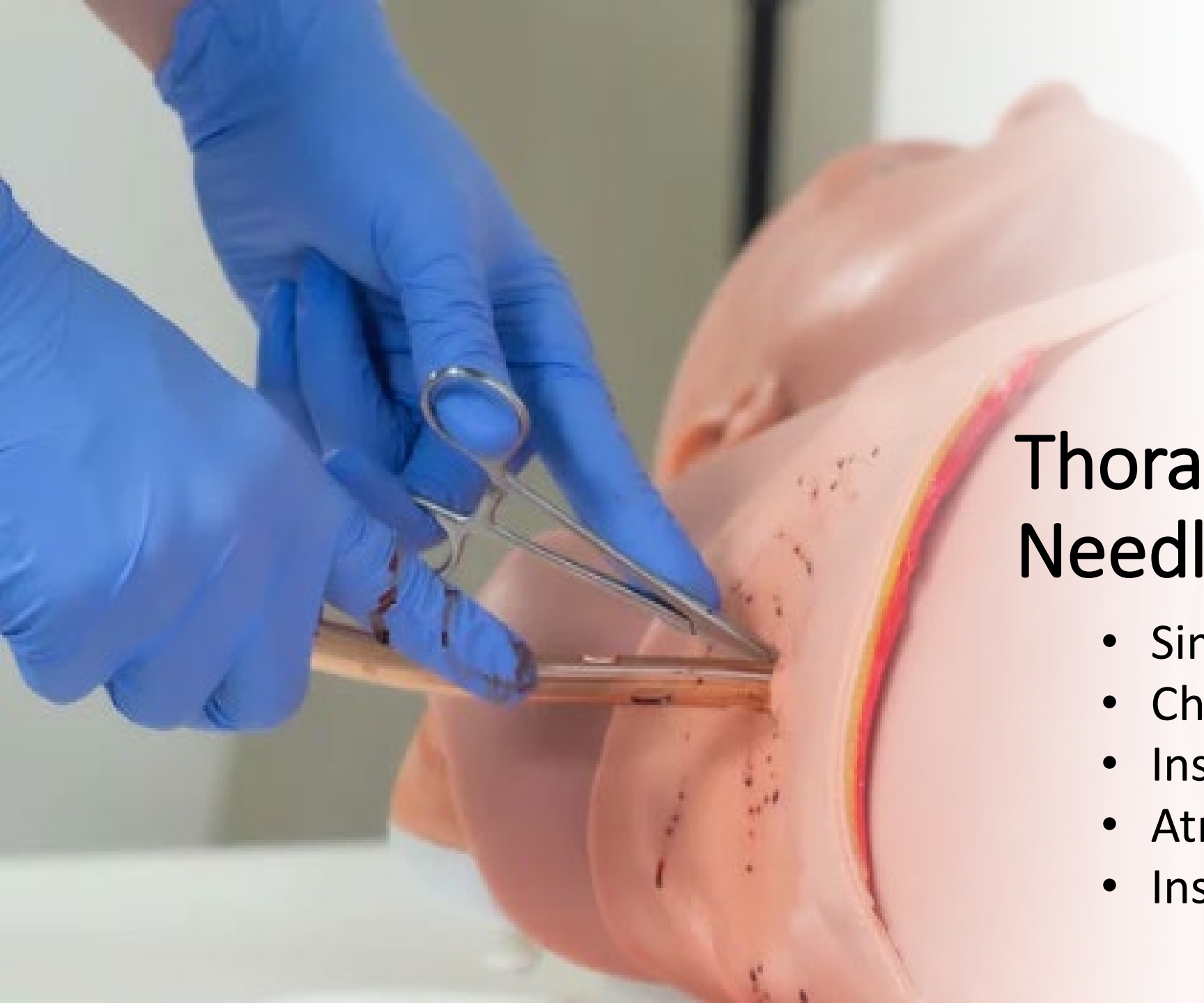
- Artificial bowel
- Porcine bowel
- Staplers
 - GIA
 - TA
 - Endo GIA
 - EEA
- Instrumentation
- Reloads





Thoracentesis

- Thoracentesis trainer
- Thoracentesis kit
- Sonosite® ultrasound



Thoracostomy, Needle Decompression

- Simulab® TraumaMan
- Chest tubes
- Insertion kits
- Atrium
- Instrumentation

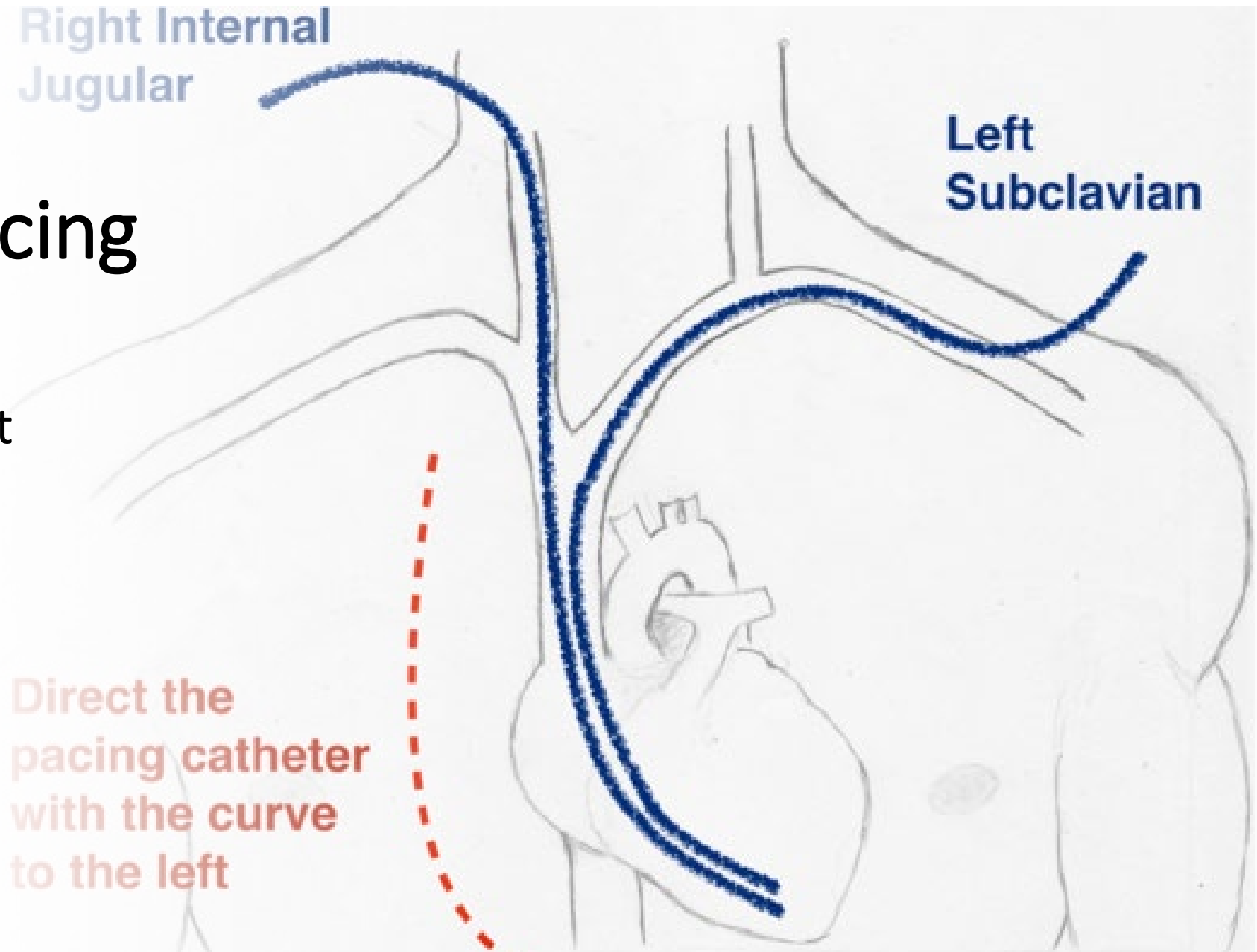
Thoracotomy for Cardiac Tamponade

- Fabricated trainer
- Instrumentation



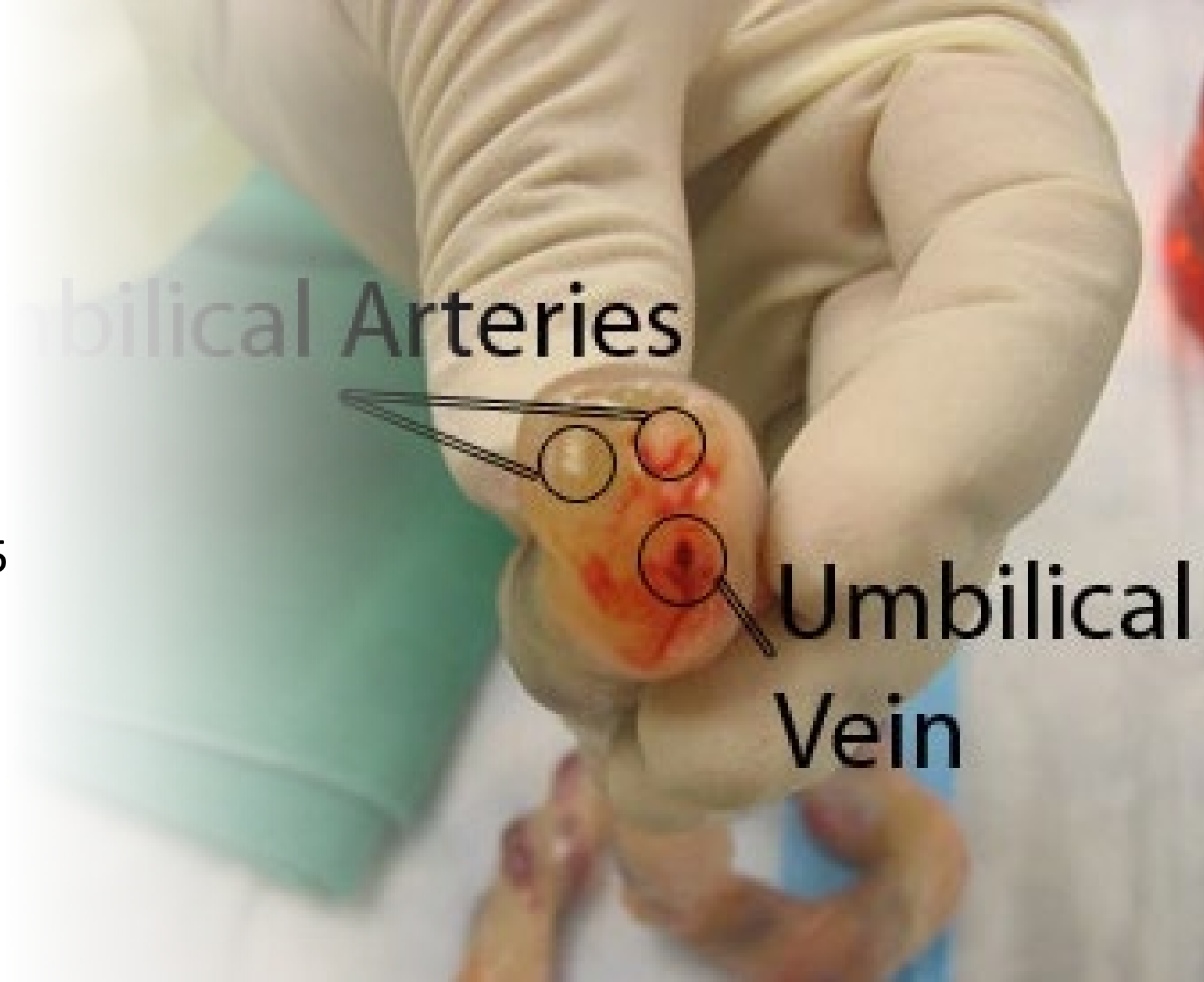
Transvenous Pacing

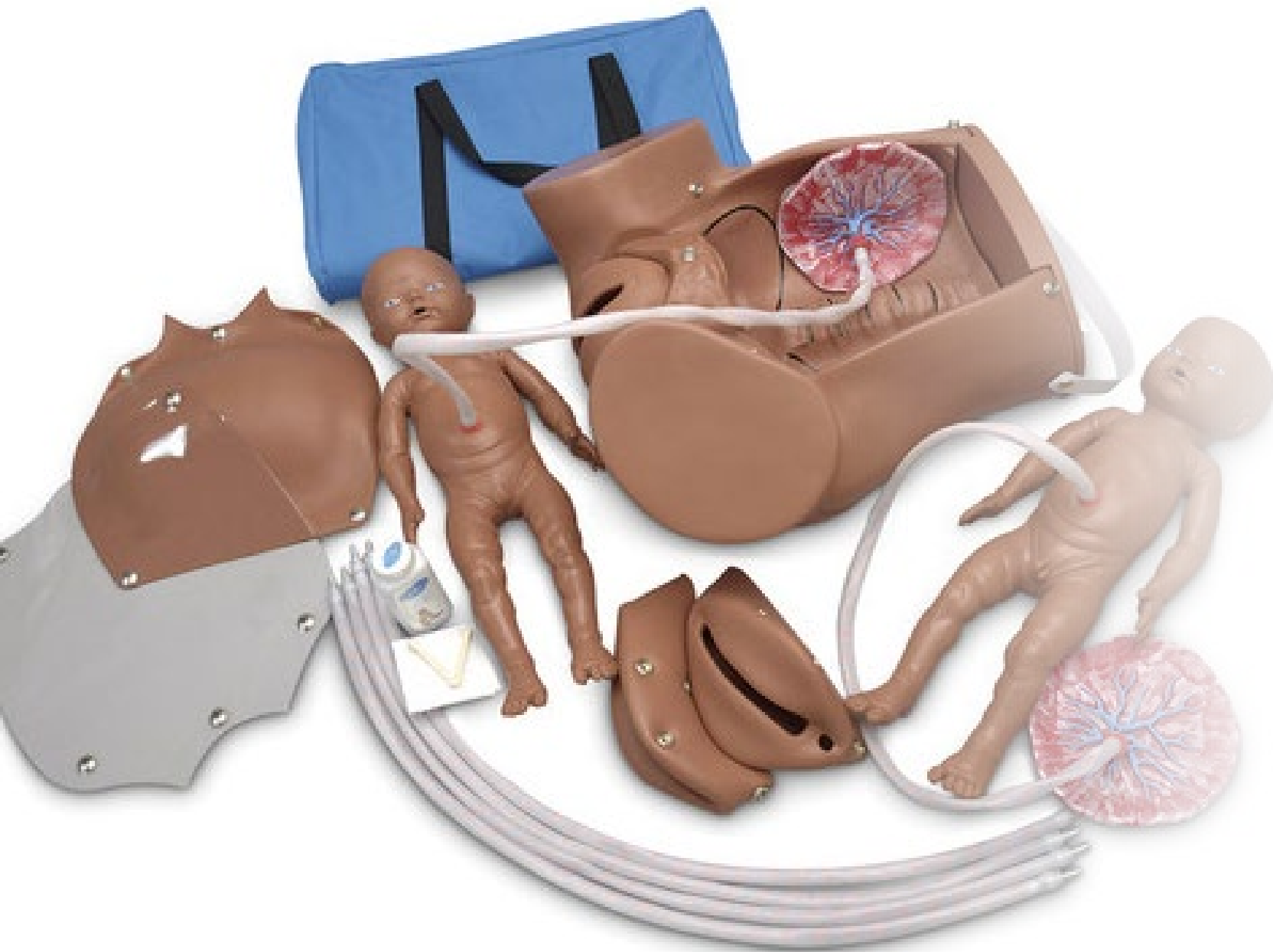
- Pacer generator
- Transvenous pacing kit
- Central line trainer



Umbilical Vein Cannulation

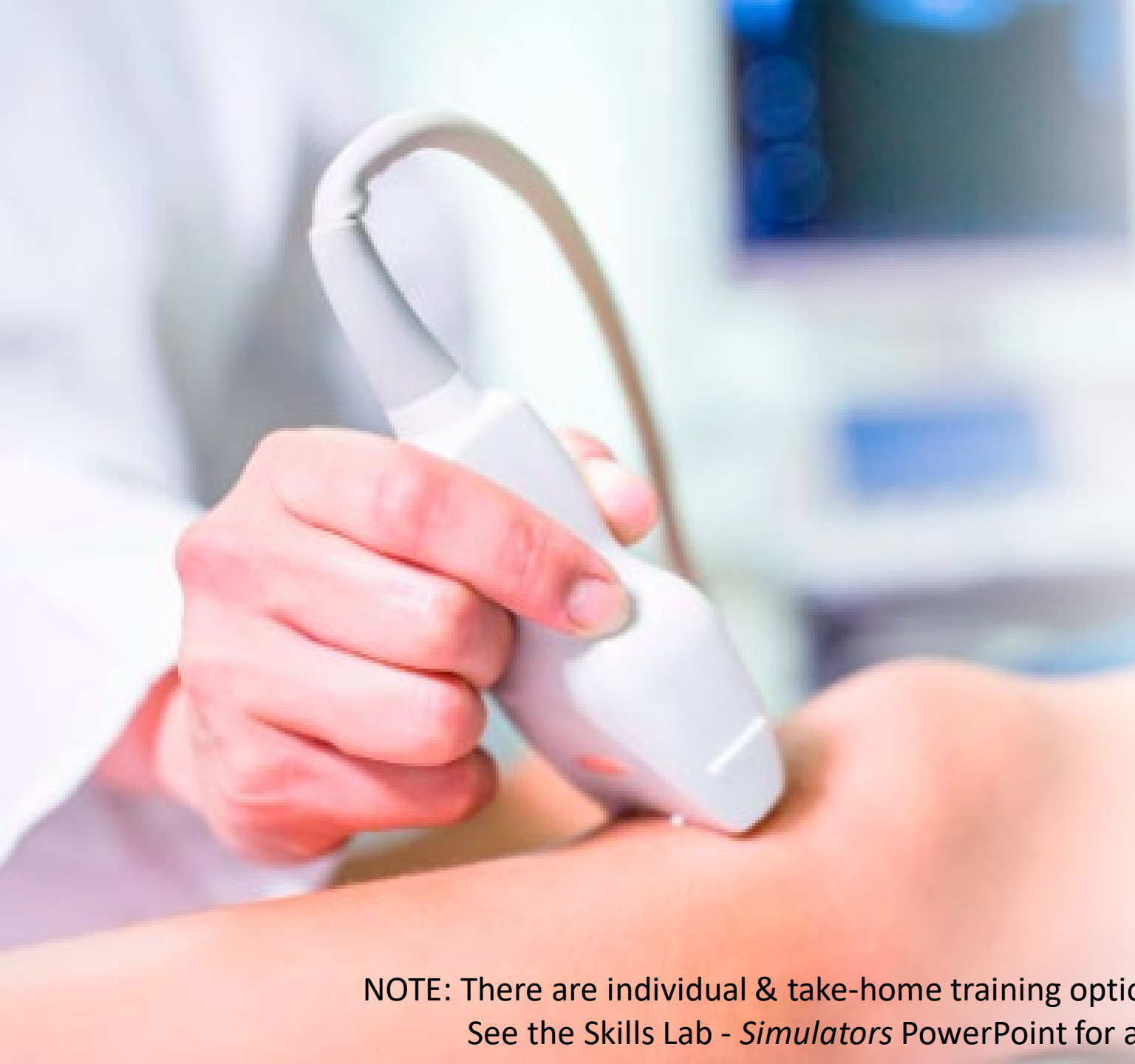
- Simulation umbilicus
- Catheterization tray
- Umbilical catheter 3.5 and 5.0





Vaginal Delivery

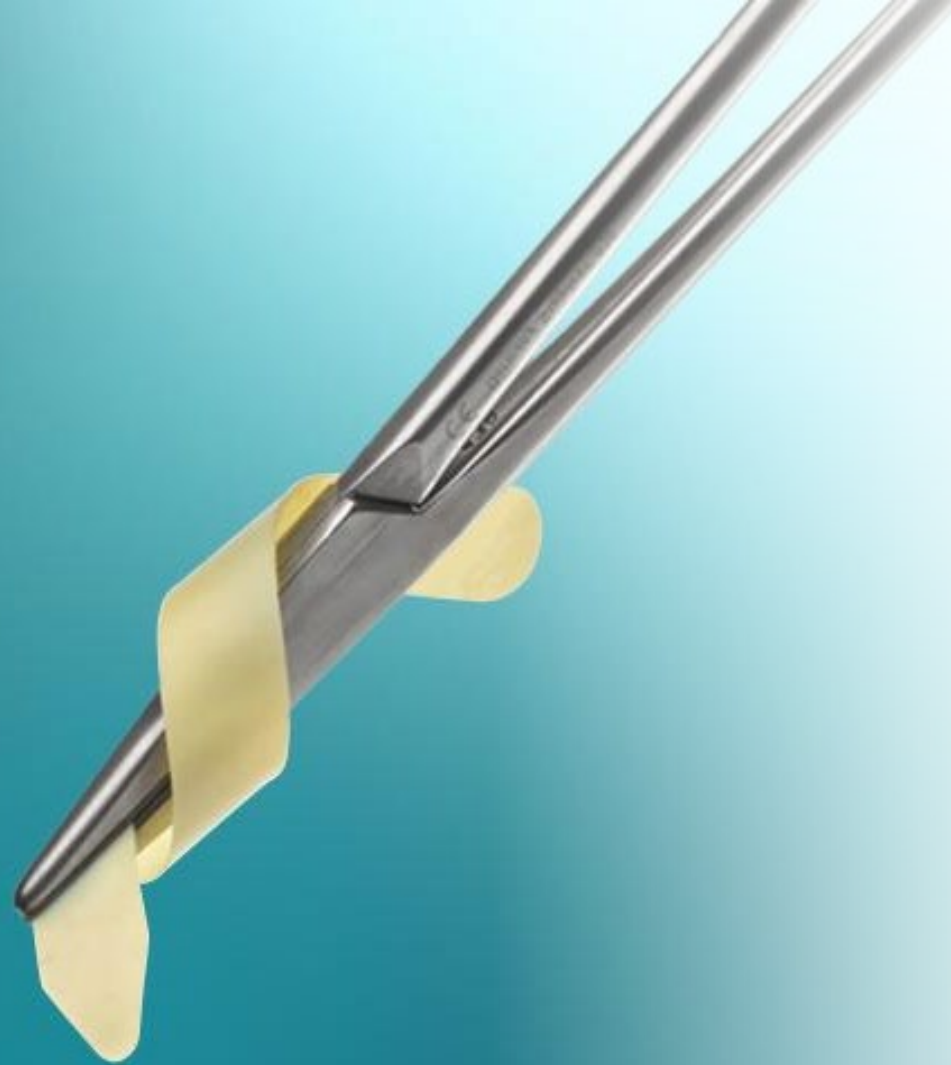
- Gaumard® Obstetric Susie® S500 - childbirth skills trainer
- Post partum hemorrhage
- Fetal and uterine palpation



Ultrasound Training

- Sonosite® Ultrasound machines
- OMT tables

NOTE: There are individual & take-home training options. Ask staff for details.
See the Skills Lab - *Simulators* PowerPoint for additional details.



Vascular Surgery

- Grafting
 - Biologic patch (LeMaitre Vascular, Inc.)
 - PTFE
 - Porcine aorta
 - Simulation veins/arteries
 - Instrumentation

NOTE: There are individual & take-home training options. Ask staff for details.

Wet Labs

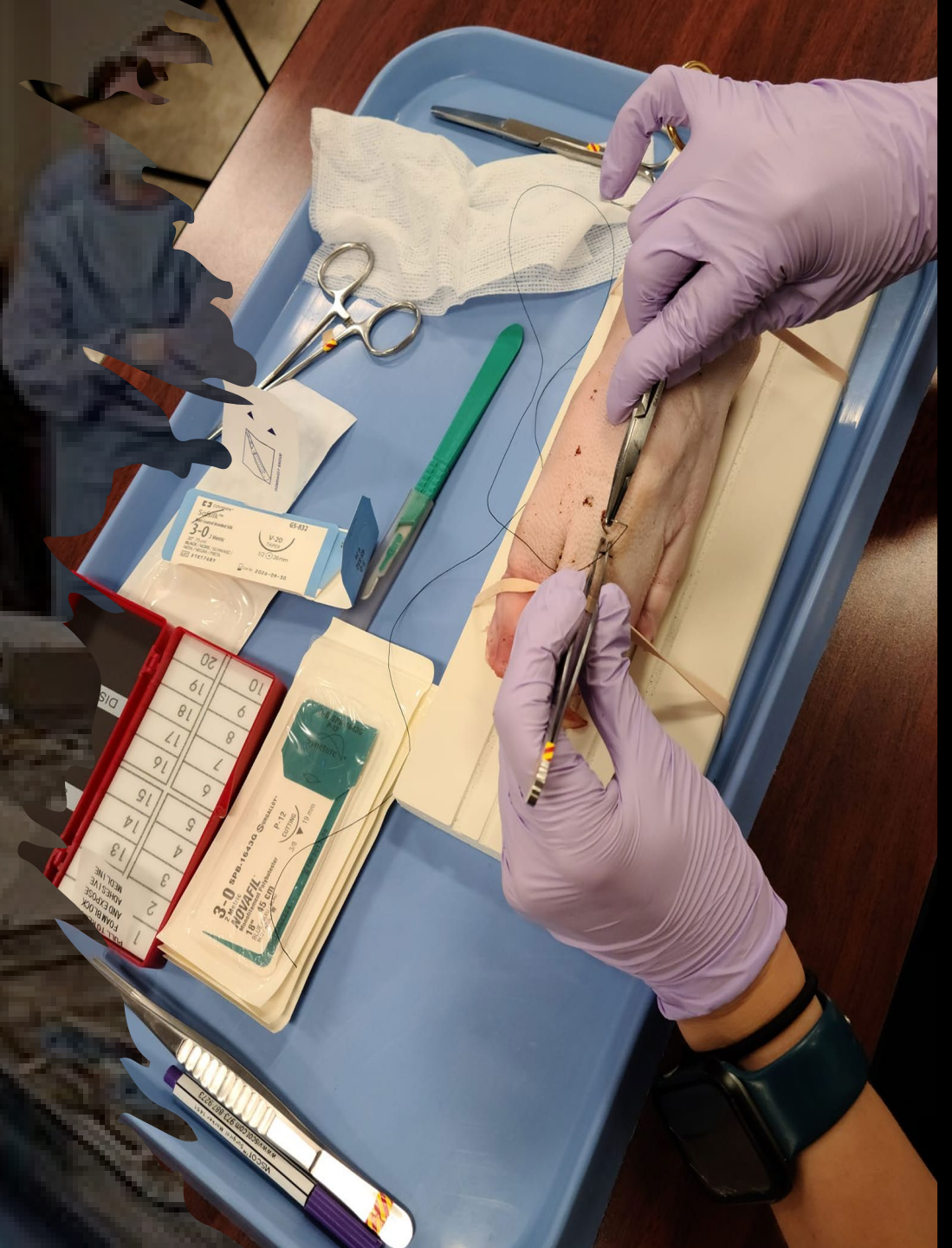
Learning sessions

- Dissection
- Surgical procedures
- Skin closure
- Biopsy

Tissue Types

- Human cadaver
- Porcine

** See Skills Lab staff with all inquiries



In Situ Training

We can help you make your training more realistic.



Malignant Hypothermia Drills

Mass Casualty Incidents

